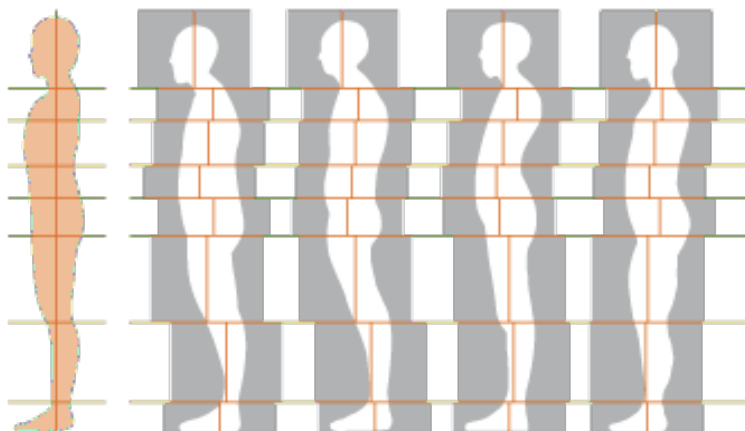


# WORKSHOP INVITATION

The Ten Sessions of Rolfing®  
A Creative - Interactive Process

**HARVEY BURNS**  
SERIES OF FOUR WORKSHOPS



“We have been training together in 1985, him being an auditor and me a practitioner.

Ever since we have a long lasting friendship with lots of shared history of our life.

I specially appreciate Harveys touch, his wonderful sense of Humor, his curiosity and playfulness.

I am very happy that he has agreed to come again and teach the format of 4 times 4 days workshop at my place in Switzerland.”

# The Ten Sessions of Roling®

## A Creative - Interactive Process

### About the Workshops

Some years ago, I began a cycle of what I called the "4 x 4 workshops".

They were a series of four 4-day workshops designed to help fill in the gaps in people's understanding of the Roling series - both theoretically and practically.

In 2017 I offered 3 "experimental" workshops in different countries in order to share and experiment with some new developments in my way of working.

These developments are based on the ideas, principles, and abilities which I have been refining for over 30 years, and are the main inspiration behind these workshop. They are:

- The ability to work with both hands, even when they may be doing different things. The hands should be able to work independently but in communication with each other.
- The ability to combine and integrate direct and indirect ways of working.
- The ability to always be involved in listening to the feedback from the tissues whatever we are doing. These clear and often subtle responses that we perceive guide us into the directions the tissues prefer to move in response to our quality of touch and goals.
- The ability to work locally/feel global, and extend our sense of touch to take in, and perceive more complex relationships.

### **ABOUT HARVEY BURNS**

Even though I have studied many somatic, psychotherapeutic, and energetic disciplines with some of the best teachers in the world, I have always tried to stay true to my roots. My roots are in music, rhythm, coordination, and improvisation - all of which now find their place in my roling work.



### **WHERE Chateau De Rochefort**

At the heart of Allaman, a picturesque village in La Côte, Château Rochefort serenely watches over its estate's four hectares of vines. Located near St-Livres on the north side of the famous Lake Geneva area surrounded by beautiful vineyards.



# ACCOMMODATIONS

## Le Cog Chantant



Dormitory Room  
**100CHF**

Double Room  
**120CHF**

Single Room  
**160CHF**

Rate per person per day, breakfast and coffee  
breaks, VAT included.

## Château Rochefort

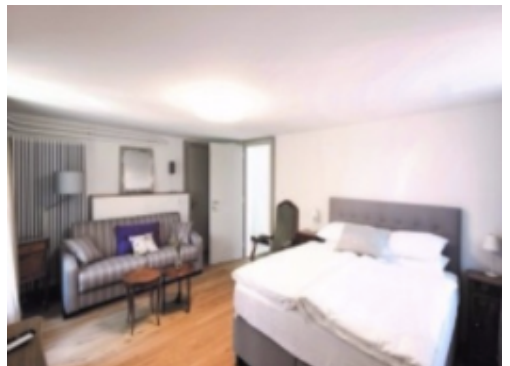


Small Double Compostella Room with  
kitchenette  
**78.— per person**

Suite Village, Apartment with kitchen,  
max 4 people  
**CHF 98.— per person**

Suite Château, apartment with kitchen,  
max 6 people  
**CHF 98.— per person**

Rate per person per day, breakfast and coffee  
breaks, VAT included.



# FOOD AND DRINKS



You have to account for an extra 30 to 45CHF for self-cooking in your apartment or local restaurant (lunch and dinner).

In Restaurants within walking distance: local, varied cuisine, also vegetarian cuisine.

Big supermarket within walking distance for self-cooking. The garden of Chateau Rochefort and the yard is open for picnics.

The lakeshore is in a 10 minutes walking distance for swimming and picnics.

# LOGISTICS

## SCHEDULE

Module 1: 24, 25, 26, 27 August 2018

Module 2: 16, 17, 18, 19. November 2018

Module 3: 29, 30, 31, March, and 1st of April 2019

Module 4: 23, 24, 25, 26 August 2019

## DAILY SCHEDULE

9 am to 12 PM and 2 PM to 6 PM

## COST

Workshop fees for 4 days

1 Installment: CHF 800

Early Bird (paid by the end of May for the first module): CHF 750

For the other workshops, it has to be paid 3 months prior to the start of each.

You also have the opportunity to pay all 4 installments paid in advance: CHF 2900

please let us know what kind of payment plan you wish when you are registering.

## PAYMENT INFORMATION

Workshop and hotel registration should be made before the end of May 2018.

Final confirmation from us will be done when the payment is made on the following account:

Anna Dorothea Neil-Raduner  
Rue St-Laurent 5  
1176 St-Livres

**Bank:** Caisse d'Epargne d'Aubonne CP 56, 1170 Aubonne

**Clearing Bank:** 8327 BIC RBABCH22CEA

**IBAN:** CH65 0832 7430 1817 4750 6

## REGISTRATION

Please confirm your participation to Anna Neil-Raduner (neil-raduner@rolfing.ch) or per telephone (+41 79 691 55 29). Please do not forget to indicate your name, mobile phone, mailing address, and email address.

FINAL REGISTRATION WILL BE FIXED WHEN PAID.

- *Cancellation fees: The following cancellation fees apply. Cancellation up to 6 weeks before start CHF 50 cancellation fee, up to 2 weeks before start 50% of the full tuition. Cancellation less than 2 weeks before start or no-show, 100% of the full tuition.*

- *We offer a cancellation insurance issued by our renowned partner Europäische Reiseversicherung. It covers your cancellation fees (except for a deductible of 20%) in case you are not able to attend the training due to significant events like illness, job loss, relocation. Please refer to the information for further details .*

- *A minimum number of participants is requested. If this minimum is not reached, classes can be canceled.*

- *Registration: I have read and agreed to the conditions above and hereby register for the Workshop with Harvey Burns in 2018. In particular, I agree with the cancellation policy and have been made aware of the Europäische Reiseversicherung cancellation insurance.*

## CONDITIONS

- Maximum number of participants: 20 persons
- The language of the workshop is English, without any translations.
- The workshop will give you 4 manipulation credits.

# GETTING THERE

## – Le Coq Chantant in St Livres (Find us)

- **By car:** A1/E25/E62 Aubonne exit (follow IKEA sign). Continue into the centre of Aubonne, turn right towards Lavigny /Bière and follow the Route de vignoble. After 4 km, turn left to St-Livres.
- **By public transport:** Swiss rail timetable information [www.sbb.ch](http://www.sbb.ch). Take a train to Morges or Etoy station and then continue to St-Livres by bus or by taxi.
- **By plane:** [Geneva airport](#). 35 minutes away from the airport, by car. Or take an SBB train.

## – Château Rochefort in Allaman (Find us)

- **By car:** A1/E25/E62 Aubonne exit (follow IKEA sign) and turn right and you will find the Château in the centre.
- **By train:** Take a train to Allaman. [www.sbb.ch](http://www.sbb.ch)
- **By plane:** [Geneva airport](#). 30 minutes away from airport, by car. Or take an SBB train.

Please choose your favorite place and room for your stay and Anna will try to find the ideal place for you to stay and will do the booking for you. For those of you who wish to stay at the Coq Chantant, it is best to have your own car to come from the Coq Chantant to the Chateau Rochefort where the workshop will be held (10 minutes away by car). If you have any questions, ask Anna!



# TESTIMONIALS



"As a Rolfer, I love to develop my hands and my touch in the clear Roling context. Harvey's workshop offered a safe learning environment to pick up different approaches of touch and special perception and to adjust them to my own hands, my own body use and my own state of knowledge and understanding. Despite all my "outside of Roling"- training I enjoyed to be back in our brilliant, clear Roling world."

**Asmus Wanke.**

---

"I really enjoyed the workshop with Harvey. The atmosphere he created with the group to explore and learn together was very special. I feel inspired and empowered by his work and enjoy how effortless this approach finds its place in my work."

**Katherina Sonderegger Kyck.**

---

"Harvey is an excellent Rolfer and teacher. He has that rare ability to communicate the quality of touch in a way that appears effortless. On top of this Harvey's workshops are always relaxed and a lot of fun. I strongly recommend you to experience Harvey's workshops. Being exposed to his masterful and creative approach transformed my Roling for the better."

**Alan Richardson.**

"An amazing workshop full of thought-provoking insights that have helped me approach the work in a new light."

**John Bowley.**

---

"Harvey's thoughtful approach to teaching reminds us that Rolwing is never only 'one thing': it is an expansive body of work, repaying exploration and curiosity. Harvey is a sensitive, generous teacher – and willing to reflect on the evolution of his own practice across the deep experience of a lifetime. "

**Naomi Wynter-Vincent.**

---

"Harvey brings a wonderful lightness to the explorative play space working with planes, shapes, and spheres of the human body. He creates a safe environment for Rolfers to engage with dimensional touch, gentle presence, and curiosity. If you have a chance to learn with Harvey, take it!"

**Elizabeth Reumont.**

---

"For me, it was experiencing what it means in your hands to touch somebody with the greatest respect for life itself."

**Eva-Maria Danko-Bodenstein.**

---

"I felt you held the workshop beautifully as the environment was rich and relaxed. In the complexity of this work, there was a simple balance between creativity, skill, and exchange. a real sense of enjoyment opened up in the learning space. These explorations still continue as my curiosity in the rolwing touch grows."

**Andrea Buckley.**

---

"Harvey's approach is imbued with clarity, integrity, respectfulness, and delight on many levels. It has enriched my work through the 3-dimensional aspects explored and has enabled me to enjoy the depth of touch that sensing volume can bring. I also appreciated the generosity of spirit that comes from someone who is genuinely curious and humble in their approach to Rolwing and who sees and encourages. the potential in others."

**Fiona Millward.**